

STITCHING THE DESIGN

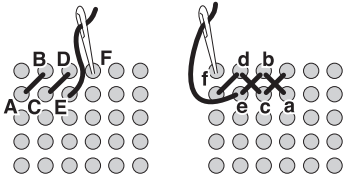
The box lid is punched with holes to make placing your stitches easy. Every item to be stitched is shown on the chart/alphabet by a symbol. The key identifies the color and number of strands to use for each symbol.

Choose either the design shown on the chart or a letter from the alphabet to stitch on the box lid. Starting in the top left corner, complete all of the Cross Stitches.

CROSS STITCH

Come up at A, go down at B, up at C, down at D, etc., across the row.

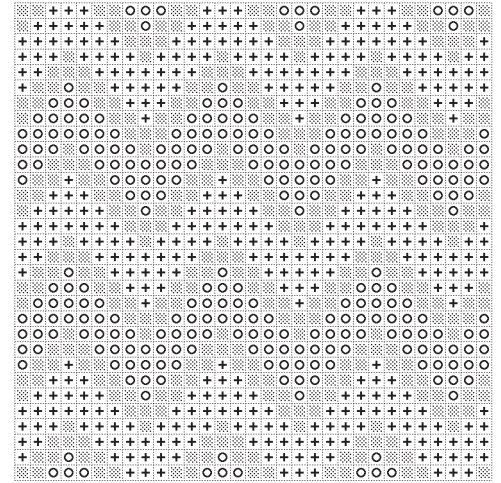
Work the other half of each cross in the same holes so that the crosses touch at the corners. Be sure that all stitches cross in the same direction.



KEY

DMC Code	Color	Cross Stitch (strands)
3768	Lt. turquoise	+ (3)
3809	Turquoise	○ (3)
310	Black	⊗ (3)
white	White	⊘ (3)

CHART



ALPHABET

Continued on next two pages.

